



A

M

LOST TYPE
CO-OP

K

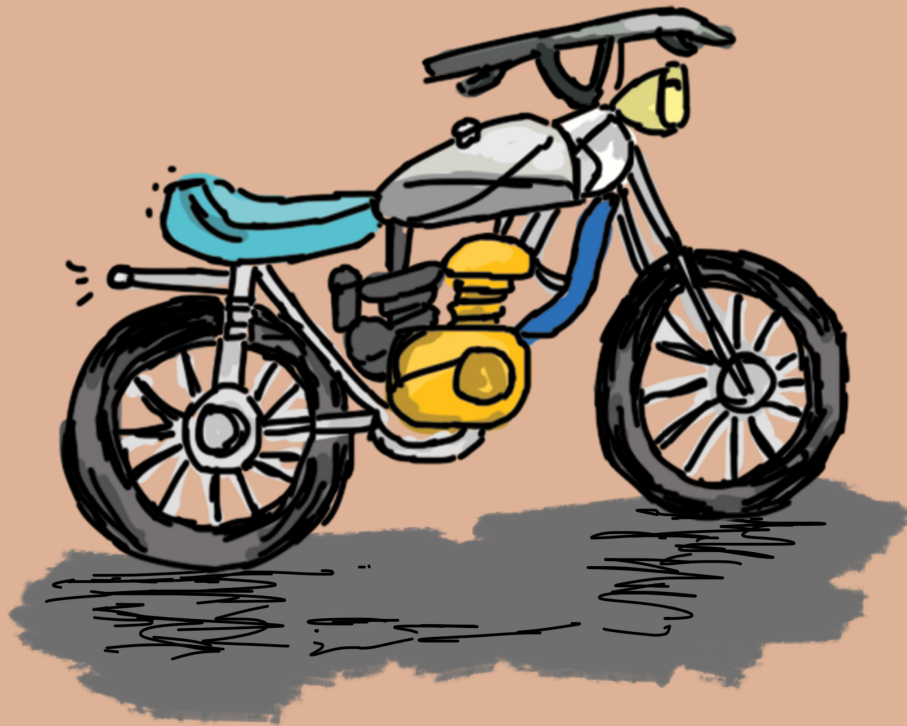
E

TYPETASTIC!

FRESH FONTS FOR SUMMER

L

T



CONTENTS

THEY'RE HERE, AND THEY'RE HOT! LOST TYPE INTRODUCES A SPECIAL COLLECTION OF BRILLIANTLY CRAFTED TYPEFACES ADDED TO THE COLLECTION ON WWW.LOSTTYPE.COM.



TYPETASTIC!
FRESH FONTS FOR SUMMER

TOMMASO.....	1
CYLBURN.....	2
KLINIC SLAB.....	3
LAVANDERIA.....	4
MENSCH.....	5
ABRAHAM LINCOLN.....	6





TOMMASO

DESIGNED BY ELI HORN

BEAUTIFUL LINE WIDTH VARIATION IN THIS CONDENSED SANS-SERIF. PERFECT FOR AN ELEGANT MODERNIST HEADLINE.

ELI HORN
BORN 1986, BRITISH COLUMBIA, CANADA
LIVES AND WORKS IN VANCOUVER

THE QUICK
BROWN FOX
JUMPS OVER
THE LAZY
DOG

Cylburn

DESIGNED BY DAI FOLDES

CYLBURN IS A SEMI-CONNECTED SCRIPT STRUCTURALLY BASED ON ROUNDHAND BUT WRITTEN WITH A POINTED BRUSH AND RESTRAINED TENSION THAT SEPARATE IT FROM ITS TRADITIONAL ROOTS.

DAI FOLDES
DAI IS A CLASSICALLY TRAINED PAINTER TURNED TYPE DESIGNER, WHO INCORPORATES CORE ART PRINCIPLES INTO HIS UNIQUE WORK.

*Moi, je veux
quinze clubs de
golf...
...et du
whisky pur*



Klinic Slab

DESIGNED BY JOE PRINCE

IN 4 WEIGHTS (AND ITALICS), THE 8 FONT KLINIC SLAB FAMILY IS ONE OF OUR MOST COMPREHENSIVE RELEASES TO DATE. A CONTEMPORARY, VERSATILE SLAB SERIF, KLINIC IS A WORKHORSE THAT MARRIES PERSONALITY AND FUNCTIONALITY.

JOE PRINCE

JOE PRINCE IS A GRAPHIC DESIGNER THAT SPECIALIZES IN LOGO AND TYPOGRAPHY DESIGN. HE CRAFTS HAND-MADE TYPEFACES THAT ARE HEAVILY INFLUENCED BY MODERN GEOMETRY AND SIMPLE FORMS. HIS WORK CAN BE SEEN IN USE ALL OVER THE WEB, MAINLY AS WEBFONTS, AND CONTINUES HIS PASSION FOR DESIGN EACH DAY.

A large fawn
jumped quickly
over white zinc
boxes.



Lavanderia

DESIGNED BY JAMES.T.EDMONDSON

BASED ON LETTERING FOUND ON LAUNDROMAT WINDOWS OF SAN FRANCISCO'S MISSION DISTRICT, LAVANDERIA FEATURES NUMEROUS OPENTYPE FEATURES AND THREE WEIGHTS.

JAMES T. EDMONDSON

STUDENT AT THE ROYAL ACADEMY OF ART IN THE HAGUE, NETHERLANDS. WAS AN AMATEUR STAND UP COMEDIAN FOR ONE SUMMER.

*How quickly
daft jumping
zebras vex.*



PACK MY BOX
WITH FIVE
DOZEN LIQUOR
JUGS.

MENSCH

DESIGNED BY MORGAN KNUTSON

A CONDENSED UPPERCASE TYPEFACE WITH REGULAR, THIN, INLINE, AND BOLD WEIGHTS.

MORGAN KNUTSON
INTERFACES AND ACTIVISM. LEAD DESIGNER AT PCF & PPF MAKING WAVES FOR SOCIAL CHANGE.



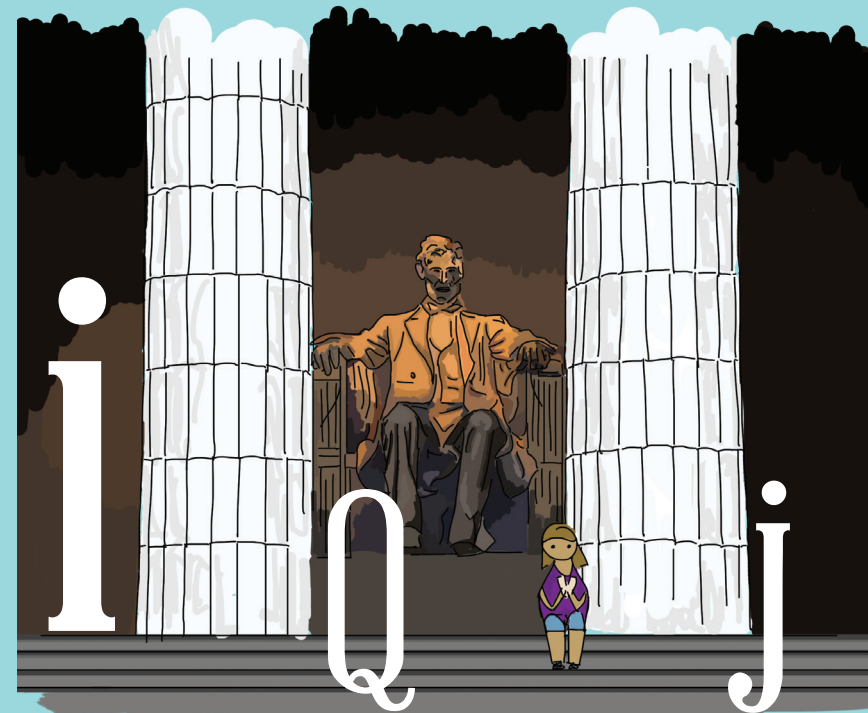
Abraham Lincoln

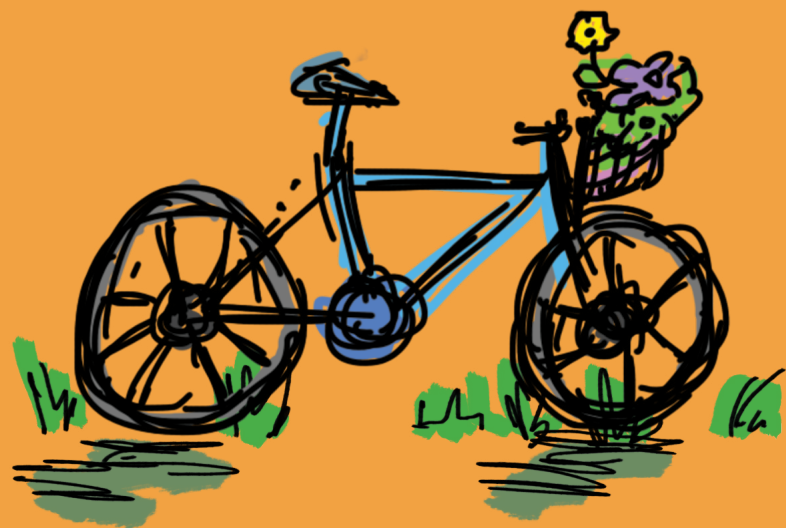
DESIGNED BY FRANCES MACLEOD

INSPIRED BY THE PROPORTIONS OF THE 16TH PRESIDENT OF THE USA, AND ADVERTISEMENTS/PLAYBILLS OF THE 1800S, ABRAHAM LINCOLN IS A HUMANISTIC DISPLAY FACE WITH MODERATE CONTRAST AND STURDY SERIFS.

FRANCES MACLEOD
A NATIVE OF WICHITA, KANSAS, FRANCES MACLEOD IS PRESENTLY PURSUING A BFA IN ADVERTISING ART DIRECTION AND GRAPHIC DESIGN AT COLUMBIA COLLEGE CHICAGO. SHE VALUES TYPE, PERSPECTIVE AND CHALLENGES.

The quick
brown fox
jumps
over the
lazy dog





BRING SOME SUNSHINE TO YOUR SUMMER WITH THESE FRESH
NEW FONTS. TO ORDER VISIT WWW.LOSTTYPE.COM TODAY!





TYPETASTIC!

LOST TYPE IS A COLLABORATIVE DIGITAL TYPE FOUNDRY.

OPERATED AND MANAGED BY RILEY CRAN AND ORIGINALLY CO-FOUNDED WITH TYLER GALPIN, LOST TYPE IS THE FIRST OF ITS KIND, A PAY-WHAT-YOU-WANT TYPE FOUNDRY. SINCE 2011 LOST TYPE HAS BEEN A SOURCE FOR UNIQUE TYPEFACES, WITH A COLLECTION OF OVER 50 DIFFERENT FACES FROM CONTRIBUTORS ALL OVER THE WORLD. 100% OF THE FUNDS FROM SALES OF THESE FONTS GO DIRECTLY TO THEIR RESPECTIVE DESIGNERS. LOST TYPE FONTS HAVE BEEN USED ACROSS THE WORLD, AND RECENTLY HAVE BEEN FEATURED IN PROJECTS FOR NIKE, STARBUCKS, DISNEY AND THE PRESIDENT OF THE UNITED STATES. LOST TYPE CONTINUES TO BE DEDICATED TO THE IDEA THAT QUALITY FONTS SHOULD BE MADE AVAILABLE TO ANYONE WHO WANTS TO CREATE AN INDIVIDUAL PIECE OF CHARACTERFUL DESIGN.

WWW.LOSTTYPE.COM